

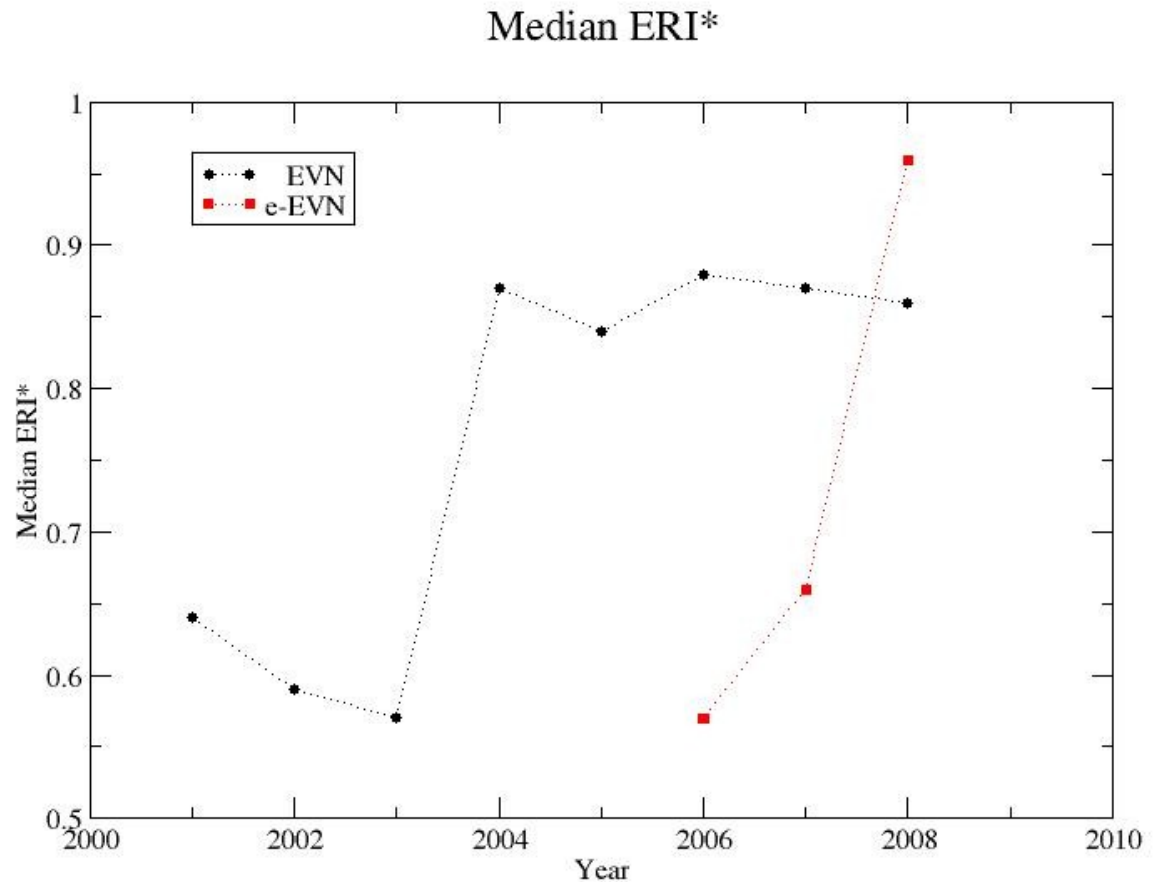
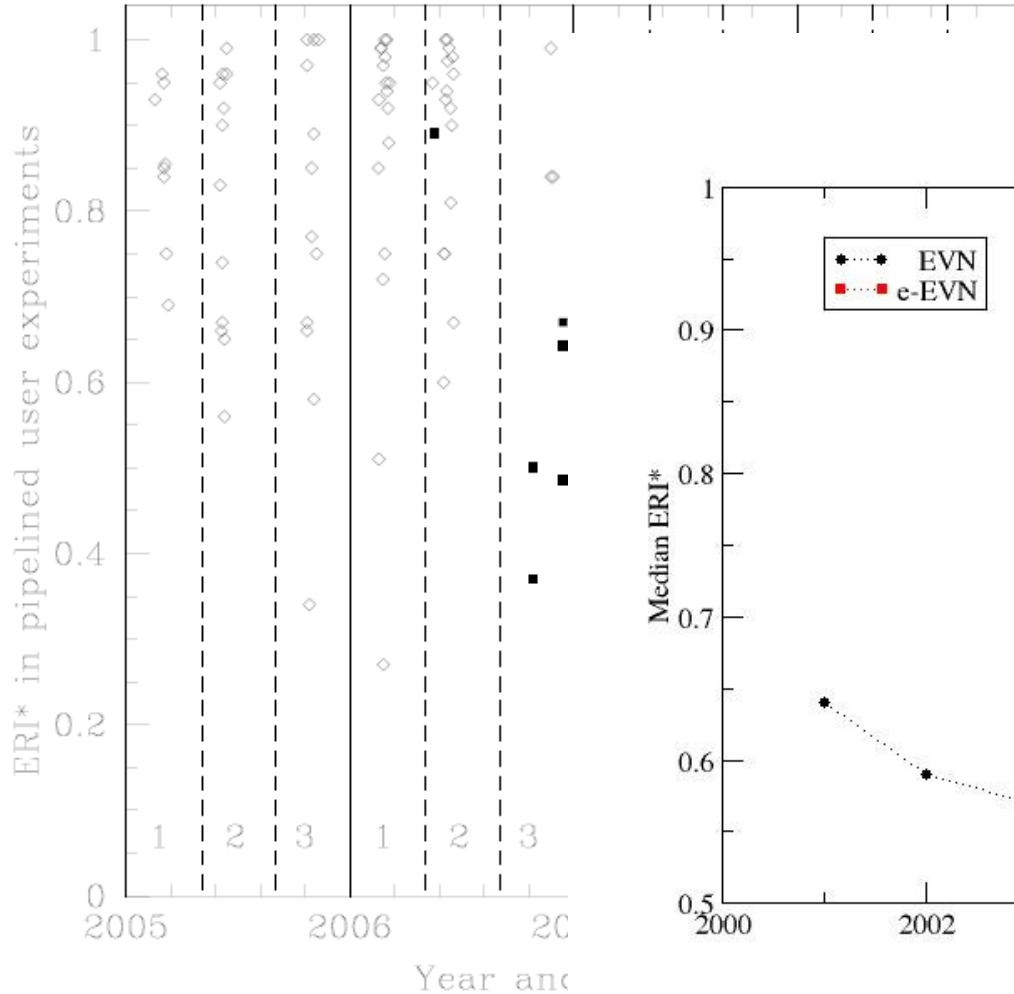
# Network Reliability

Giuseppe Cimò, JIVE  
April 22, 2008



# ERI\* vs. Time

Median ERI\* for 2007 = 0.87



# Network Reliability

(Sessions: 3/2007 and 1 & 2/2008)

- A number of stations reported brief data losses due to problems with either Mk5 or FS control computers which required rebooting. *This problem seems to occur less frequently than previously reported.*
- Several issues related to hardware problems (from power supplies to antenna drives)
- Problems also reported about disks and Mark5 disk modules. A few disk packs did not work (at all or for part of experiments).
- Data throttling during 1Gb/s experiments in Cm (cause identified, solution enacted).
- Phase jumps in Tr (lasted for 2 session, solved in April 2008)
- *Many VCs at several stations did not work properly during some experiments.*  
The problems occurred randomly, though the ftp tests spotted some bad VCs.  
The NME reports give information about the VC statistics.
- All the ftp tests have been successfully done using the JIVE software correlator. An informative web page is available shortly after each ftp test.  
Skype conference during the NME/FTP tests has been very helpful to quickly communicate with the stations.
- FTP tests spotted a number of (quickly fixed) problems.
- In exp EA038, more Merlin stations were used. Cambridge, Defford, Darnhall and Knockin recorded on the same disk pack. There appears to have been intermittent link failures for Cambridge and Defford, data are fine.
- Ys - 1st EVN participation in K-band 2/2008 (K, S/X scheduled 3/2008).