



The European ALMA Regional Centre

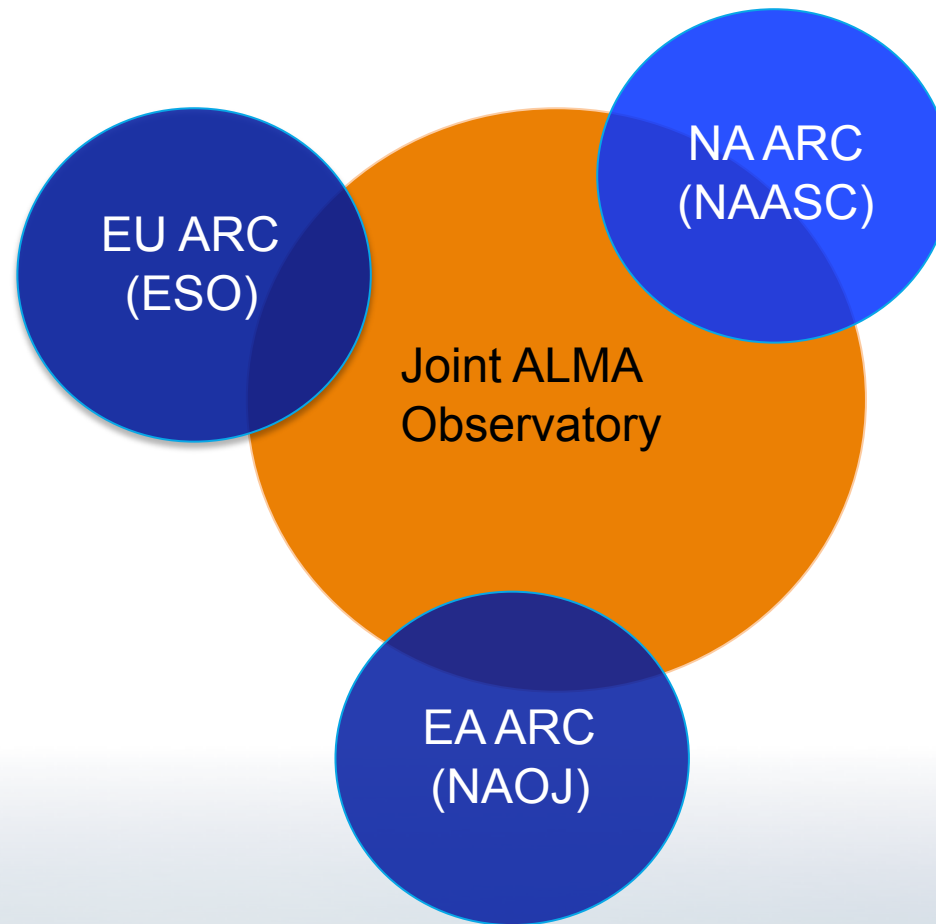
The German ARC node

University of Bonn
University of Cologne



ALMA Regional Centres = interface between users and the observatory

One ARC for each executive

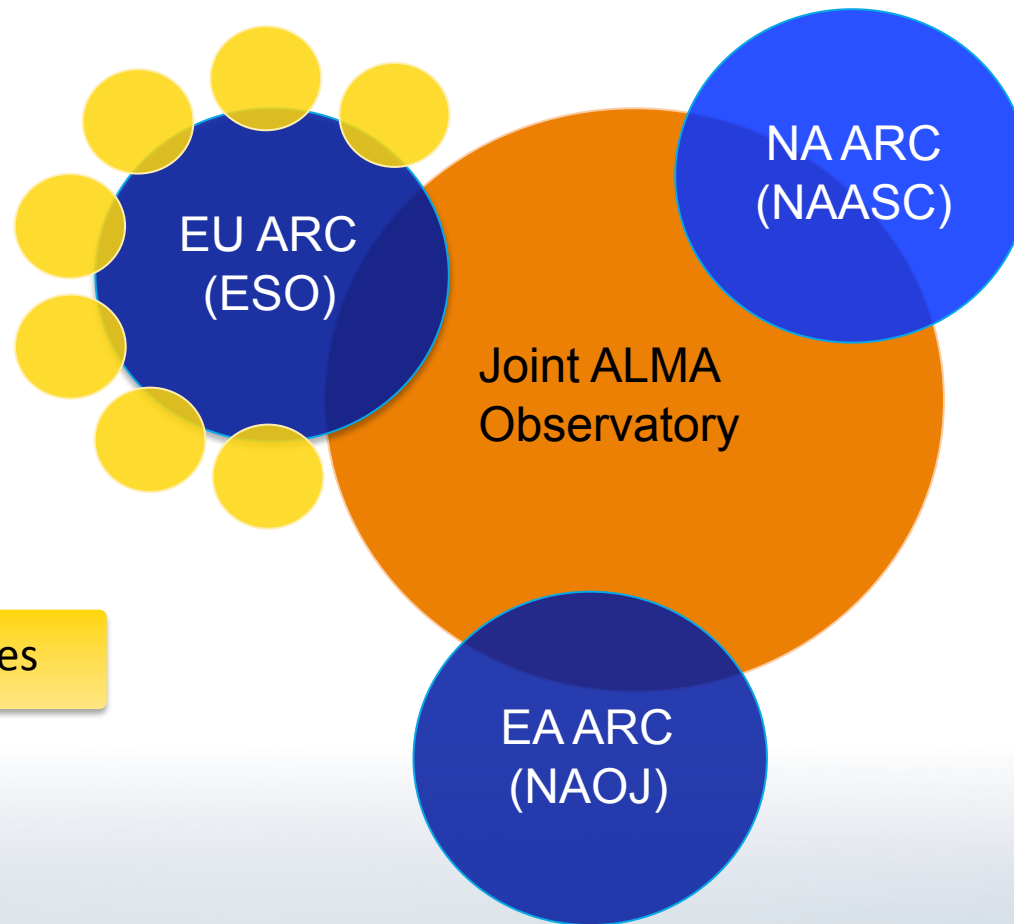


ARCs provide a package of operationally critical services to ALMA operations in Chile and the regional user communities (helpdesk, archive, software and hardware maintenance and development)

The ARC is your “one-stop shop” for all things ALMA!

ALMA Regional Centres = interface between users and the observatory

One ARC for each executive



European ARC nodes

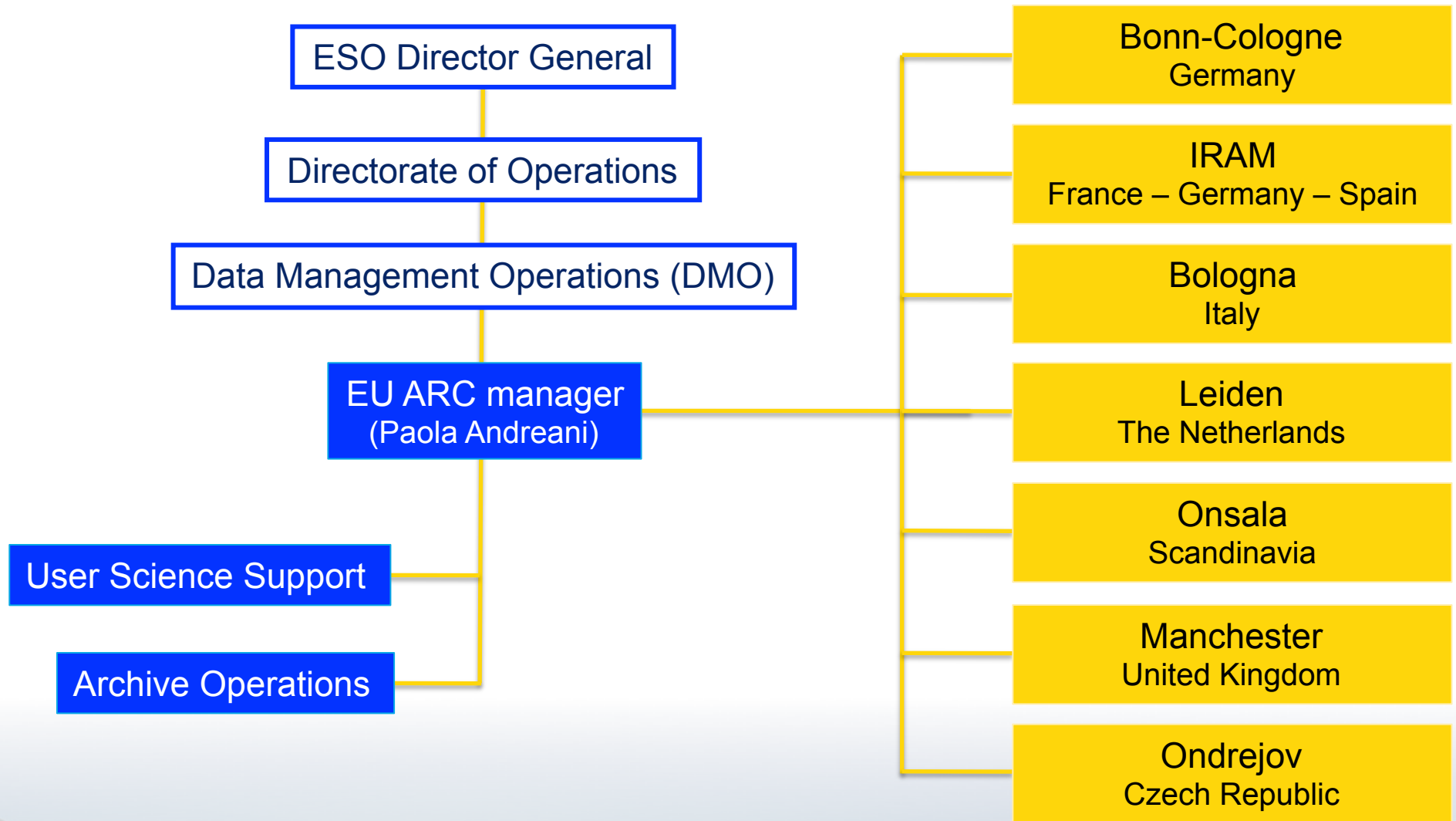
ARCs provide a package of operationally critical services to ALMA operations in Chile and the regional user communities (helpdesk, archive, software and hardware maintenance and development)

In the EU executive, enhanced services like face-to-face support and advanced data reduction techniques are delegated to the ARC nodes





The European ARC structure





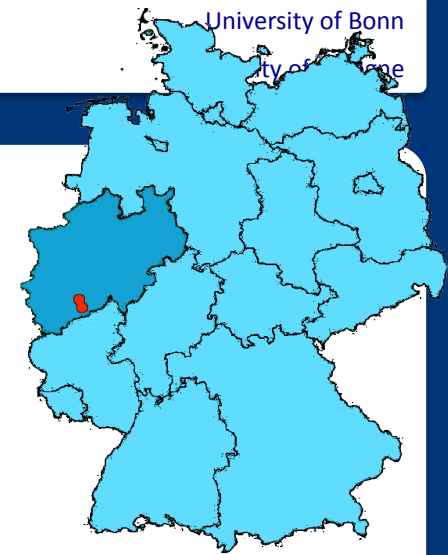
Tasks of the European ARC:

- interface between the user community and the observatory (**helpdesk**)
- close links with the Department of Science Operations (DSO) in Chile
- **basic (pipeline) data analysis**
- **archive**
- observing strategies
- software/tools development
- support for large/advanced programs
- **user training** (workshops, tutorials, schools)



Tasks of the European ARC nodes:

- **face-to-face user support**
- participate in the ALMA helpdesk
- **contact to local scientific community**
- new software and techniques
- advanced data reduction
- **support for special projects**
- public relations and outreach
- **user training** (workshops, tutorials, community days)

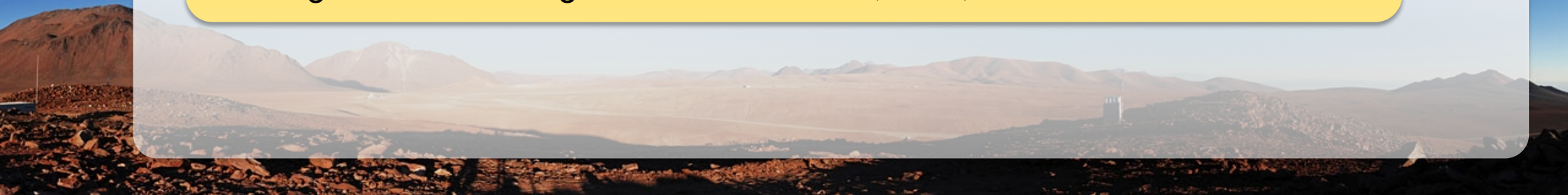


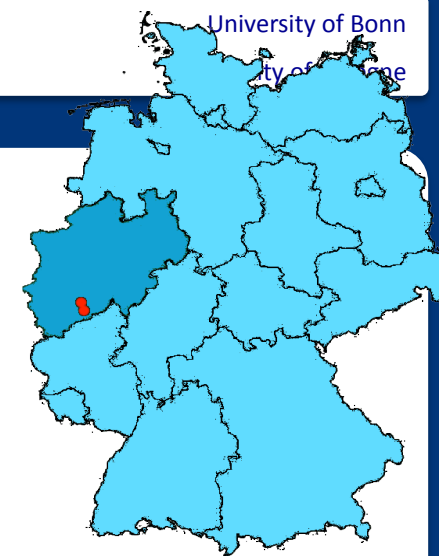
The German ARC node: Background

- initially an initiative of the Research Association for Interferometry in NRW (2004), including the Universities of Bonn, Cologne, Bochum, and the MPIfR
- today: Universities of Bonn and Cologne

technical, scientific, and educational collaborations:

- International Max-Planck Research School for Radio and Infrared Astronomy
- Bonn-Cologne Graduate School in Physics and Astronomy
- operation of KOSMA, NANTEN2, APEX plus development of instruments
- instruments for Herschel, SOFIA, LBT, and VLTI
- the local 100-m telescope in Effelsberg
- strong involvement in global- and mm-VLBI, EVN, and LOFAR





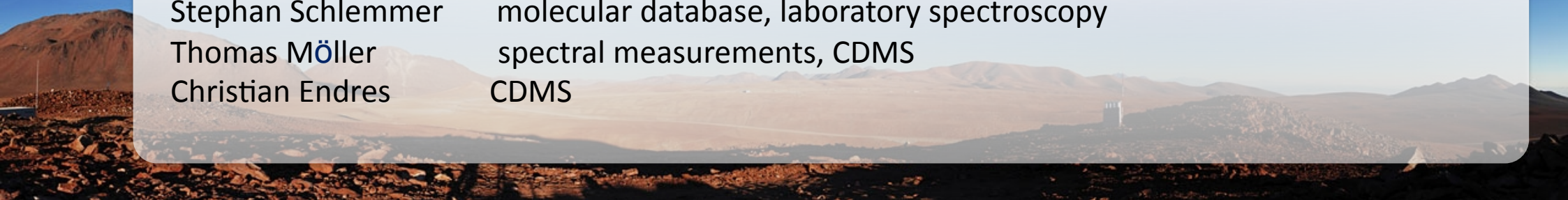
The German ARC node: personnel

Bonn:

Frank Bertoldi	administration, training, outreach, short spacings
Wouter Vlemmings	management, CASA, training (until Sep. 2011)
Stefanie Mühle	management, f2f support, CASA (since Sep. 2011)
Reinhold Schaaf	ARTIST/IT support, f2f support
Rolf Kuiper	ARTIST (until Aug. 2011)
Kaustuv moni Basu	CASA, OT, short spacings
Ramiro Franco	OT, web maintenance (until Sep. 2011)
Felipe Alves	CASA, f2f support, polarization, web (since May 2011)
Matthias Maercker	OT/CSV, f2f support, CASA (ESO fellow)
Vernesa Smolicic	OT/CSV, f2f support, training (ESO fellow)
Sofia Ramstedt	polarisation/calibration (from Jan. 2012)
Sandra Burkutean	short spacings, simulations, SZ (PhD student)
Michael Geffert	public outreach

Cologne:

Peter Schilke	coordination, CATS, molecular lines
Stephan Schlemmer	molecular database, laboratory spectroscopy
Thomas Möller	spectral measurements, CDMS
Christian Endres	CDMS





How to get help: ALMA user support within the European ARC

The function of the European ARC:

- Enhanced software/tools development
- Basic (pipeline) data analysis
- Archive operation
- Observing strategy
- Support for large/advanced programs
- User training (workshops, tutorials, schools)
- (face-to-face support: delegated to ARC nodes)

Need help?

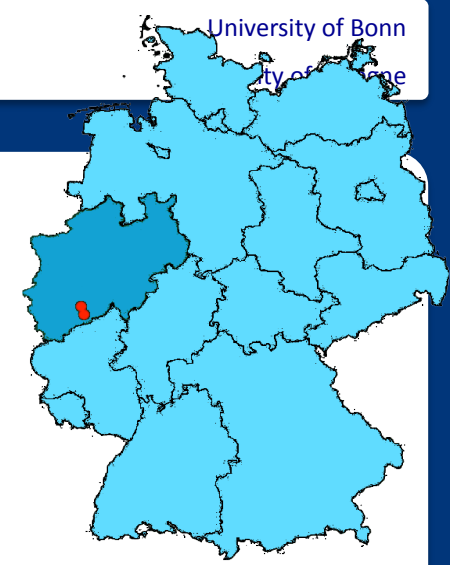
Contact the ALMA helpdesk



How to get help: What can the German node do for you?

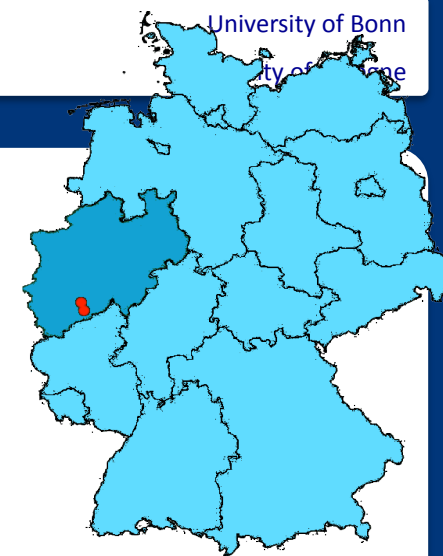
You are welcome to contact or visit Bonn for help with

- Proposal preparation: you have a project in mind, but need help in planning?
- Phase II support: proposal accepted, but how to prepare the scheduling blocks?
- Data analysis: project observed, but you need advice/infrastructure for data reduction?
- Interpretation: all done, but what are you really looking at?
- special expertise: advanced data analysis and modeling (incl. CDMS), polarimetry, zero spacings: continuum
- in addition: tutorials, community days, ALMA news, mailing list



Need help?

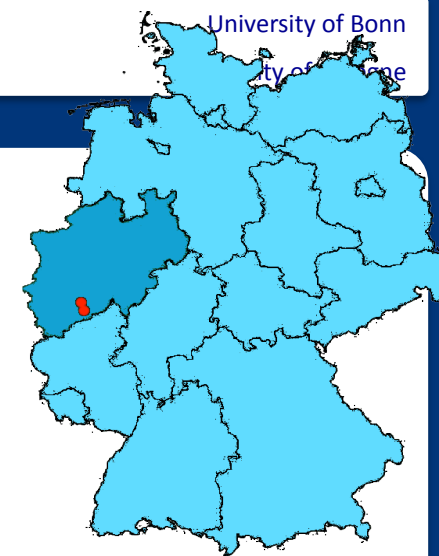
Contact us via the ALMA
helpdesk



The infrastructure at the German ARC node:

- a dedicated ARC room with workstations:
 - access to all required software (OT, CASA) and the data archive
- a server with sufficient computing power:
 - effective data reduction and analysis
- a dedicated contact scientist:
 - personal support to guarantee a productive stay in Bonn
- a personal desk with internet connection for your laptop
- a parent-child room
- a vibrant research environment (Argelander-Institut für Astronomie, MPIfR, University of Cologne)
- free tea and coffee





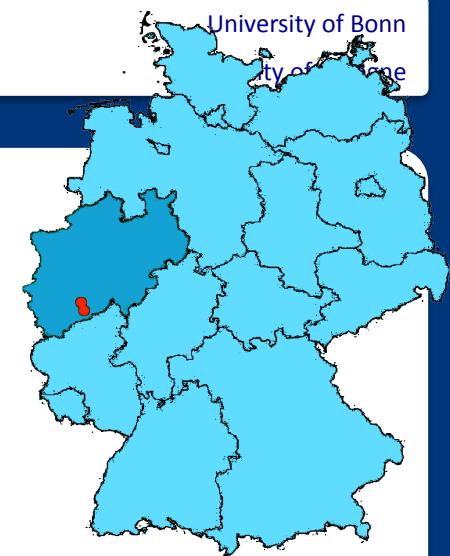
For more information:

<http://www.astro.uni-bonn.de/ARC> (⇒ mailing list)

arc@astro.uni-bonn.de

info booth on the ground floor (⇒ talk at your institute)



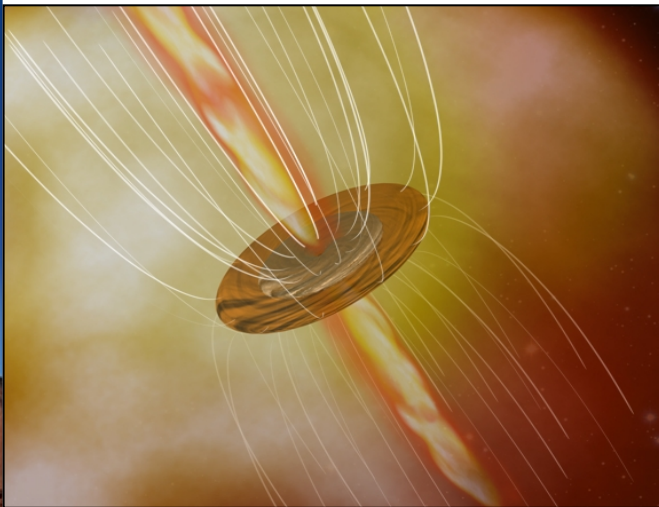


ALMA related science at the German ARC

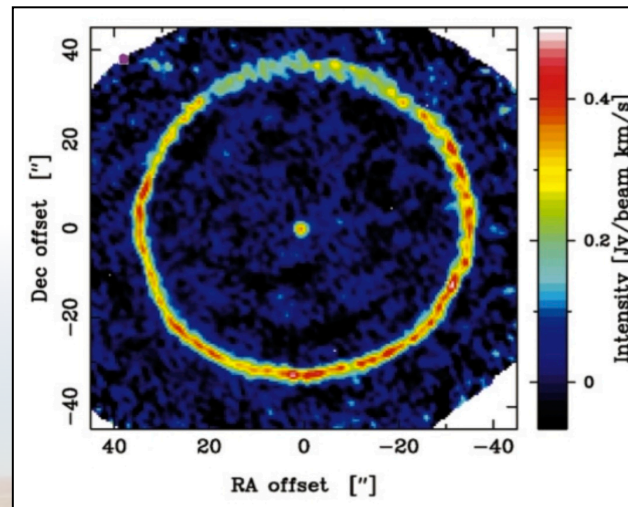
What will we do with ALMA? A few examples...

Stellar evolution:

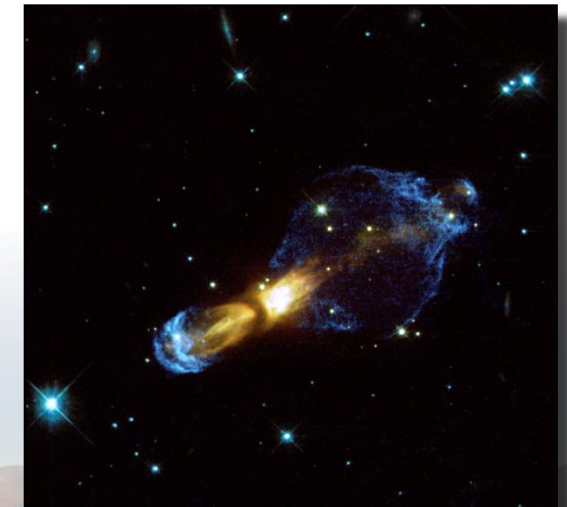
- The birth of stars, molecular clouds, infall, outflows, circumstellar disks
- Magnetic fields in massive star formation and evolved stars
- The mass-loss history, mechanism, and symmetry on the AGB



Cepheus A (artist impression)
(credit: T. Maercker)



detached shell around TT Cyg
(Olofsson et al.)



Rotten Egg Nebula
(NASA/ESA Bujarrabal)

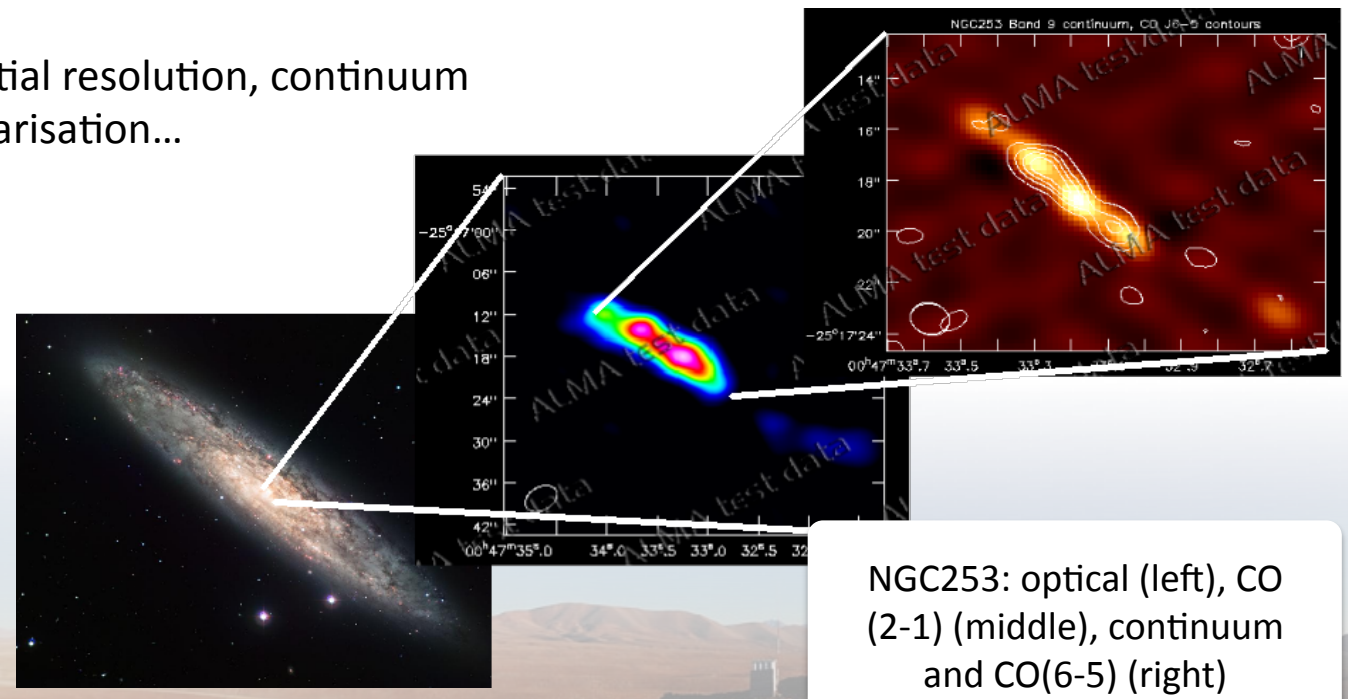
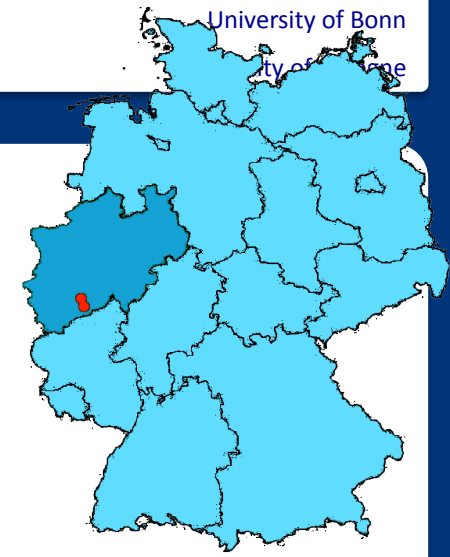


ALMA related science at the German ARC

What will we do with ALMA? A few examples...

Extragalactic astronomy:

- High-resolution imaging of high-z galaxies in CO, C⁺, CI, and dust
- SF rates in high-z galaxies, morphologies, dynamical mass
- detecting the first galaxies at $z = 6 - 11$ in, e.g., C⁺
 - high sensitivity, high spatial resolution, continuum and line observations, polarisation...

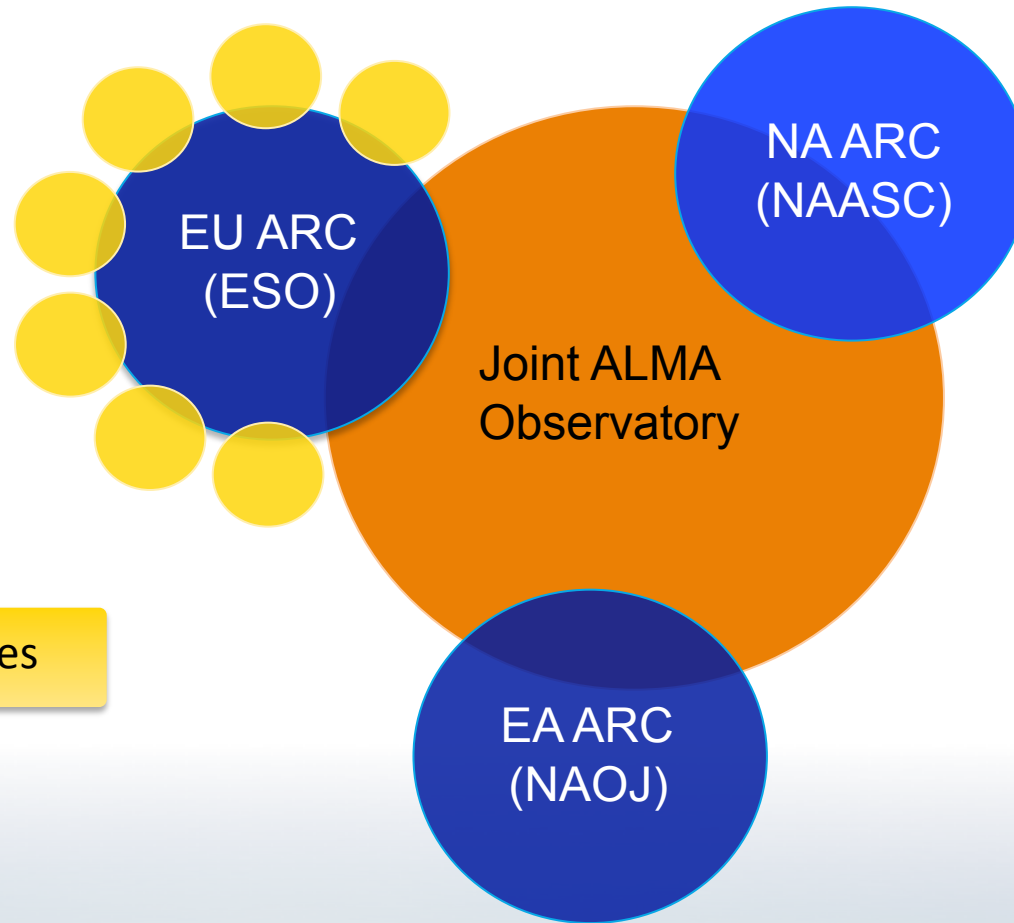


NGC253: optical (left), CO (2-1) (middle), continuum and CO(6-5) (right)



The ALMA regional Centres

ALMA operations shared by three ARCs

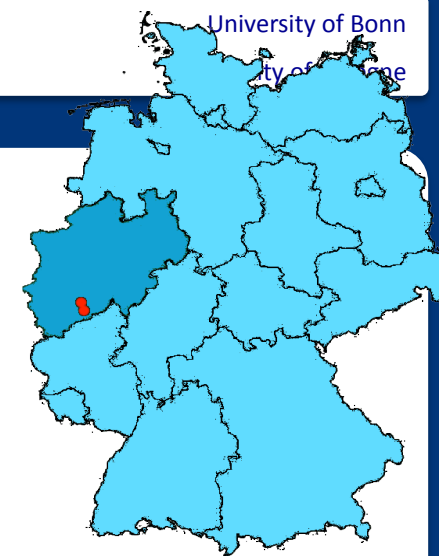


ARCs provide basic user interface, as well as basic archive, software, and hardware maintenance and development

Enhanced services are needed to provide advanced user support, e.g. face-to-face support

European ARC nodes

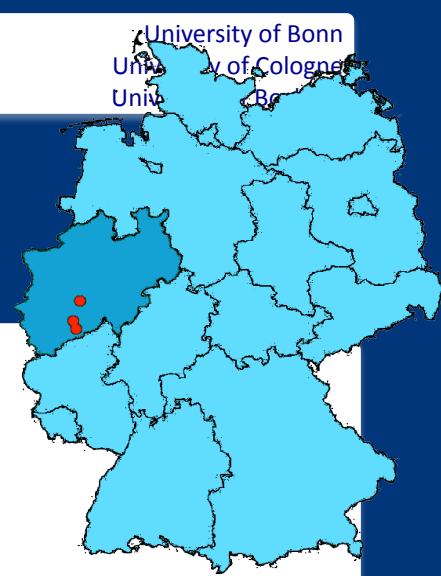




- initiative of the Research Association for Interferometry in NRW (2004)
- Universities of Bonn, Cologne, and the MPIfR
- technical, scientific, and educational collaboration:

- International Max-Planck Research School for Radio and Infrared Astronomy
- Bonn-Cologne Graduate School in Physics and Astronomy
- operation of KOSMA, NANTEN2, APEX plus development of instruments
- instruments for Herschel, SOFIA, LBT, and VLTI
- the local Effelsberg 100-meter telescope
- strong involvement in global- and mm-VLBI, EVN, and LOFAR





- Initial initiative of the Research Association for Interferometry in NRW (2004)

first: Universities of Bonn, Cologne, Bochum, and the MPIfR

today: Universities of Bonn and Cologne

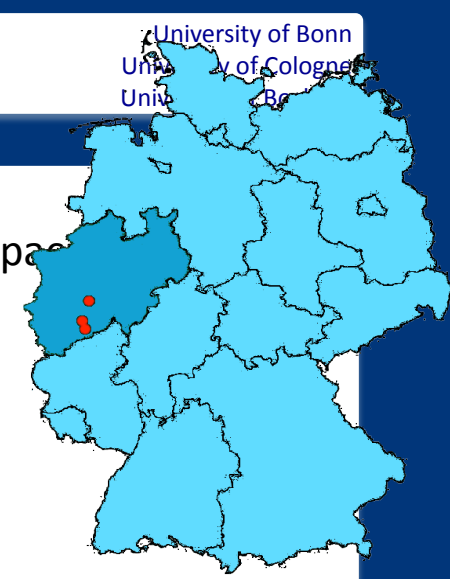
- technical, scientific, and educational collaboration:

- International Max-Planck Research School for Radio and Infrared Astronomy
- Bonn-Cologne Graduate School in Physics and Astronomy
- operation of KOSMA, NANTEN2, APEX plus development of instruments
- instruments for Herschel, SOFIA, LBT, and VLT
- strong involvement in global- and mm-VLBI, EVN, and LOFAR



The German ARC node: Who?

University of Bonn
 University of Cologne
 University of Bonn



Bonn:

Frank Bertoldi

Administration, training, outreach, short spacing

Wouter Vlemmings

Management, ARTIST, CASA, training (→ Sep)

Ramiro Franco

OT, web pages (→ Sep)

Felipe Alves

Polarization (May →)

Kaustuv moni Basu

OT, CASA, short spacing

Matthias Maercker

OT Software/CSV, ESO fellow

Vernesa Smolicic

OT Software/CSV, ESO fellow

Reinhold Schaaf

ARTIST, IT support

Rolf Kuiper

ARTIST

Sandra Burkutean

PhD student: short spacing, simulations, SZ

Michael Geffert

Public outreach

Two open positions

Cologne:

Peter Schilke

Coordination, CATS, molecular lines

Stephan Schlemmer

molecular database, laboratory spectroscopy

Thomas Giesen

molecular database

Holger Müller

spectral measurements, CDMS

Christian Edres

CDMS

